



Destination Landfill

Kees Oranje

Google search

Assumption "Landfills"



Google™

Facts & Figures

Experience “Landfill in 2021”





Landfill Mineralz Maasvlakte

Landfill for hazardous waste with immobilisation plant;

Designated landfill for NORM waste for which notification is required ("ZELA" < 10 Bq/g);

Permit for the reuse of NORM materials for which a permit is required > 10 Bq/g (on hold);

Specific solutions for specific problems.

Facts & Figures



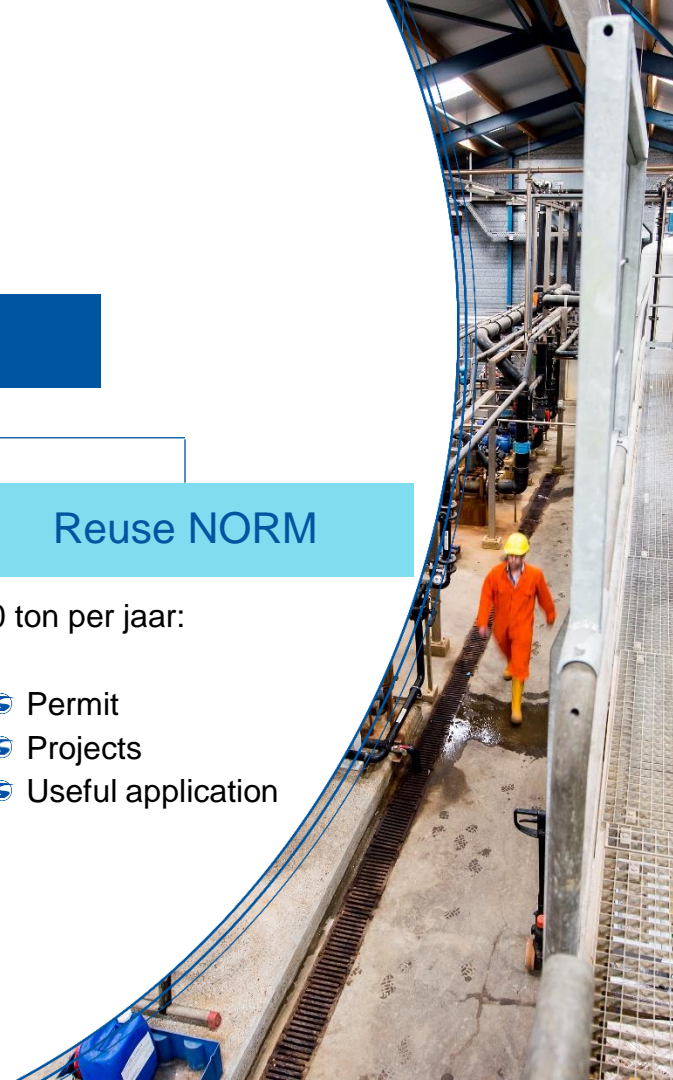
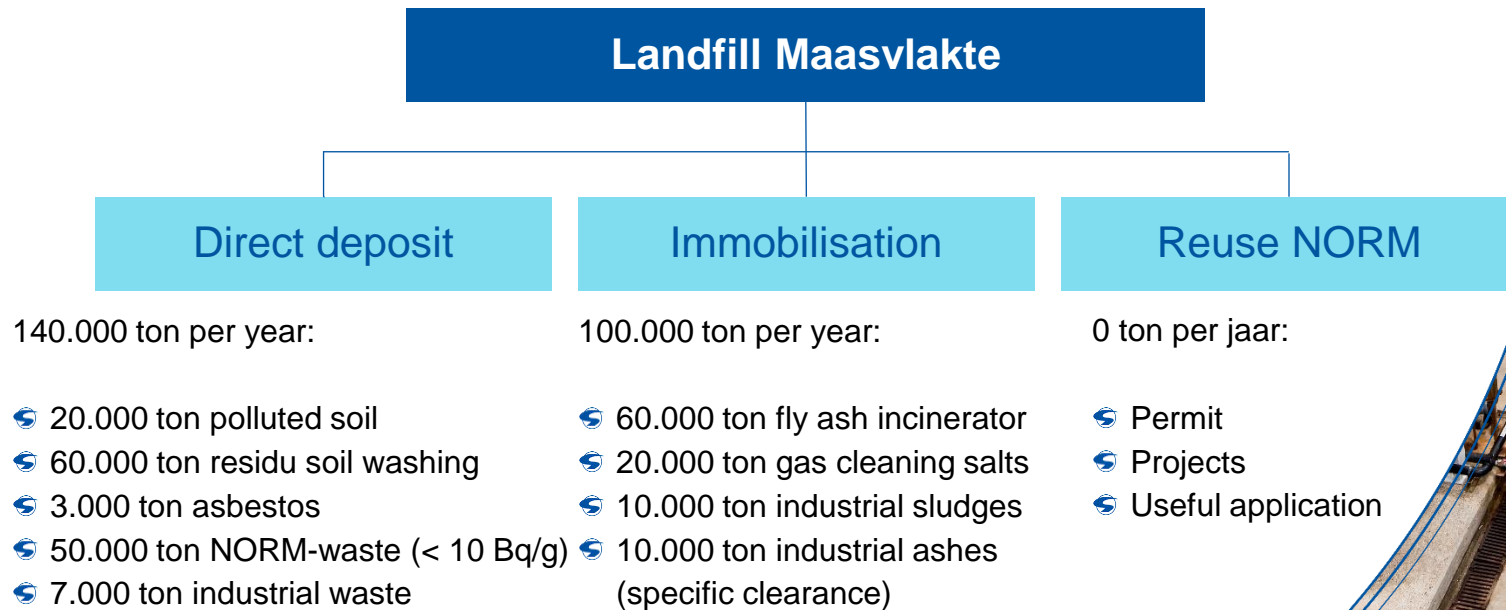
- Since october 1988;
- Area of 26 ha;
- Capacity of 8.5 million cubic meters (m³);
- Fully equipped for hazardous wast;
- Specialized in immobilisation for strongly leaching waste since 1998 (only landfill in NL);
- 30 fte.

Deponie Maasvlakte (VBM)

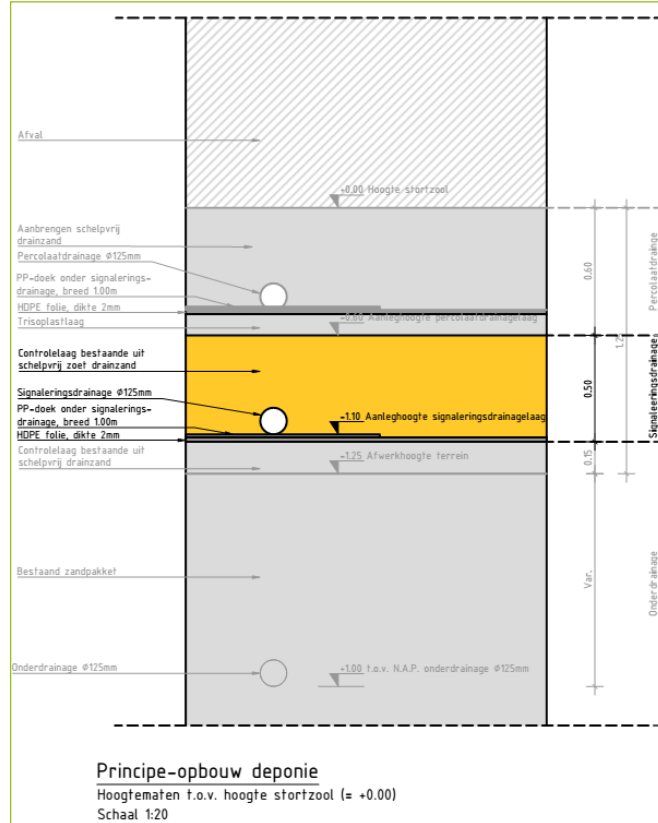


Facts & Figures

Activities



Construction landfill for hazardous waste



- Construction required by law.
- Double bottom seal.
- Dubbele check (control drainage).
- leachate water collected and treated in water purification
- Run off also collected and treated.

Construction signaling foil



Apply mineral sealing layer and 2nd foil layer



Sealing foil ready, apply sand layers

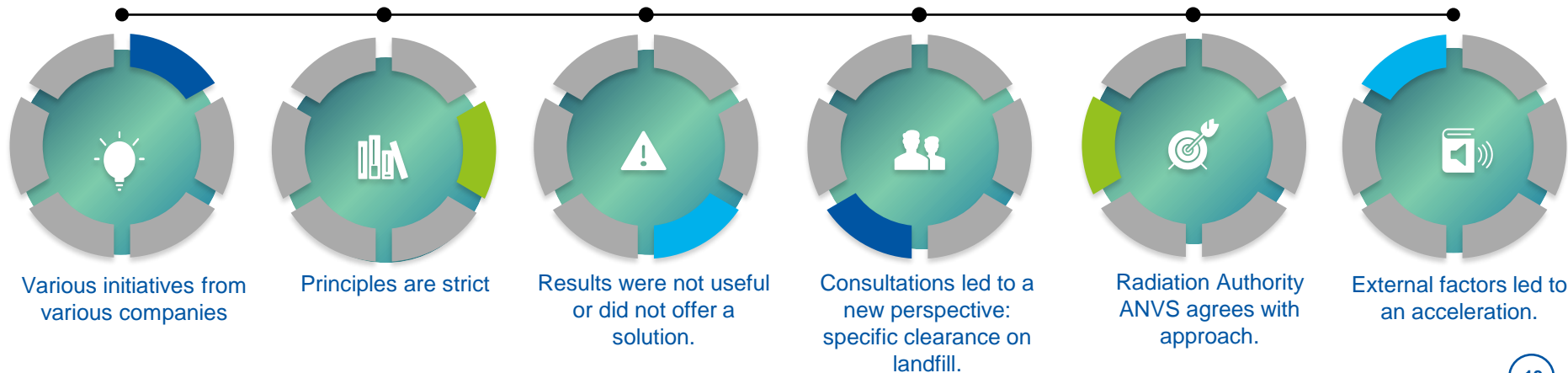


In gebruik

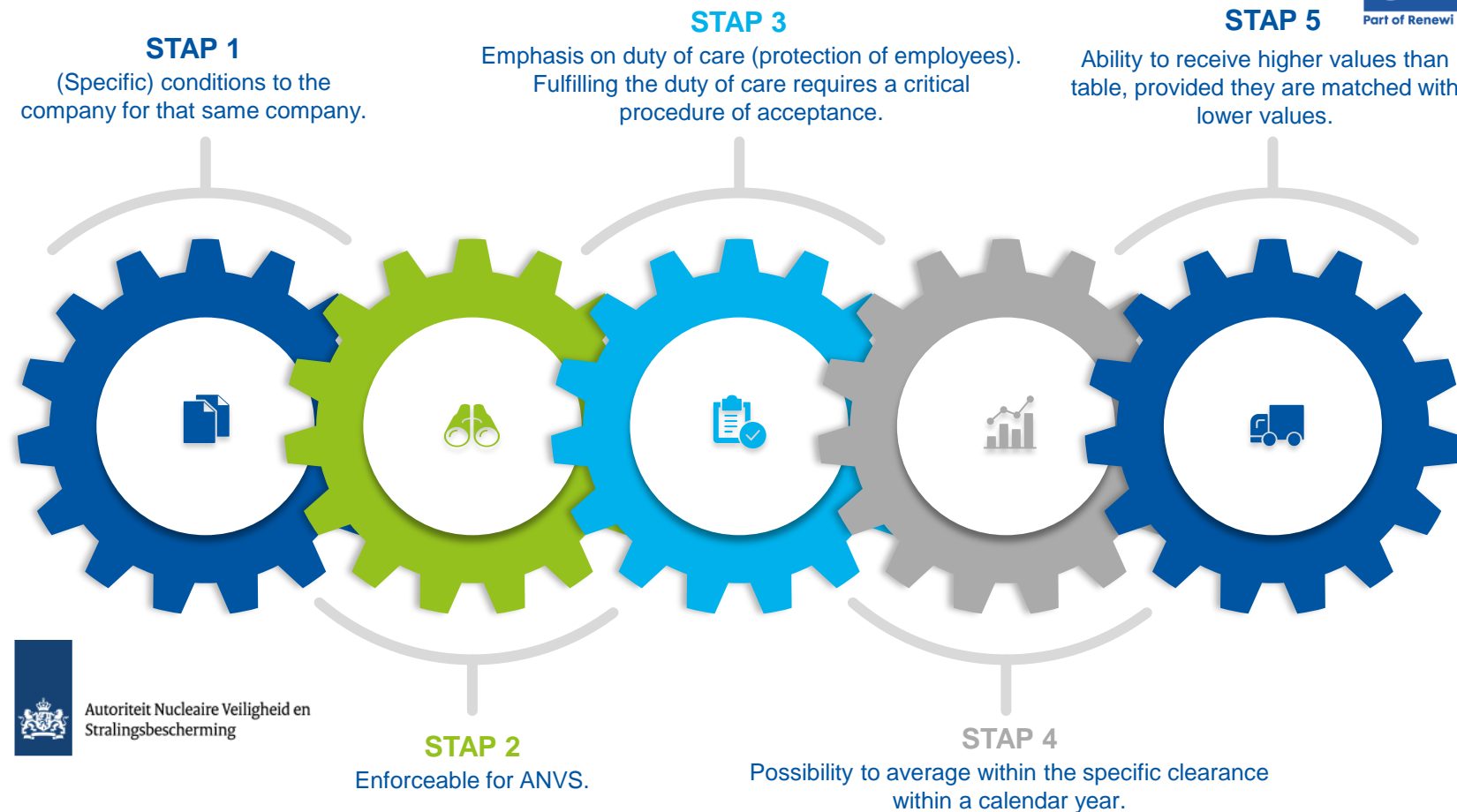




Autoriteit Nucleaire Veiligheid en
Stralingsbescherming



Elaboration



Exclusively

NORM-materials from Geothermal Energy, Oil- & Gas Extraction and the Transport of Gas;

Solution

For Geothermal Energy and Oil and Gas Extraction this means a solution for a significant part of the NORM materials, even for very high peaks (up to 1000 Bq/g or 300 Bq/g);

Conditions

Strict conditions for data provision per delivery:

- Data directly from owner of NORM material;
- Validated by (registered) Radiation Protection Expert;
- Representation of the data is a specific responsibility of the Radiation Expert;
- Representative for the party leading to a thorough and reliable estimate of employee exposure on landfill.

1

PRE-NOTIFICATION

At the first pre-notification, if necessary, a site visit to assess the administration and storage of NORM materials.

3

VERIFICATION OF DATA BY MINERALZ

Request for Landfill and implementation of the duty of care

PRE-NOTIFICATION STANDARDIZED

- Registration by primary owner of the NORM materials;
- Standard format (excel sheet);
- Associated final analysis reports as an attachment;
- Statement Radiation Expert declaring data are representative.

2

ASSIGNING WASTE REGISTRATION NUMBER AND APPOINTMENT FOR DELIVERY (DATE + TIME)

4

